

Sutter County Almonds

254.7 Assessed Acres

Sutter County, CA



Josh Cook

530.300.5294

josh@cornerstonelandco.com

BRE. Lic. 01872850



www.cornerstonelandco.com

Gabe Foster

530.300.0479

gabe@cornerstonelandco.com

BRE. Lic. 01774496

Sutter County Almonds

254.7 Assessed Acres

Sutter County, CA

Location:

The property is located on the east side of Pacific Avenue in between the towns of Nicolaus and Pleasant Grove, Sutter County, California.

Legal:

The property is made up of two (2) parcels that total 254.7 assessed acres and is legally described as Sutter County Assessor Parcel Numbers:

- 33-220-010
- 33-250-006

Use:

The property is planted to 190 acres, more or less, of Almond Orchard that was planted in November of 2016.

Soils:

The soils on this ranch are Capay Silty Clay, which are rated Class 2 by the USDA Irrigated Capability Class. (See enclosed soil map)

Water:

The property has two water sources and is currently irrigated with two on site pump and wells. In addition to the well water, the property is located in the South Sutter water district which receives its surface water rights from Camp Far West Reservoir. Water is delivered to each tree by a new micro jet sprinkler irrigation system.

Varieties:

The orchard is planted to 2/3rds Nonpareil variety, 1/6th Monterey variety and 1/6th Wood Colony varieties on a 21 X 13 foot spacing and Root pack R rootstock.

Comments:

Call Cornerstone Land Company to set up a private tour of this property. This orchard is only a few short years from full production and should produce a small crop in 2019.

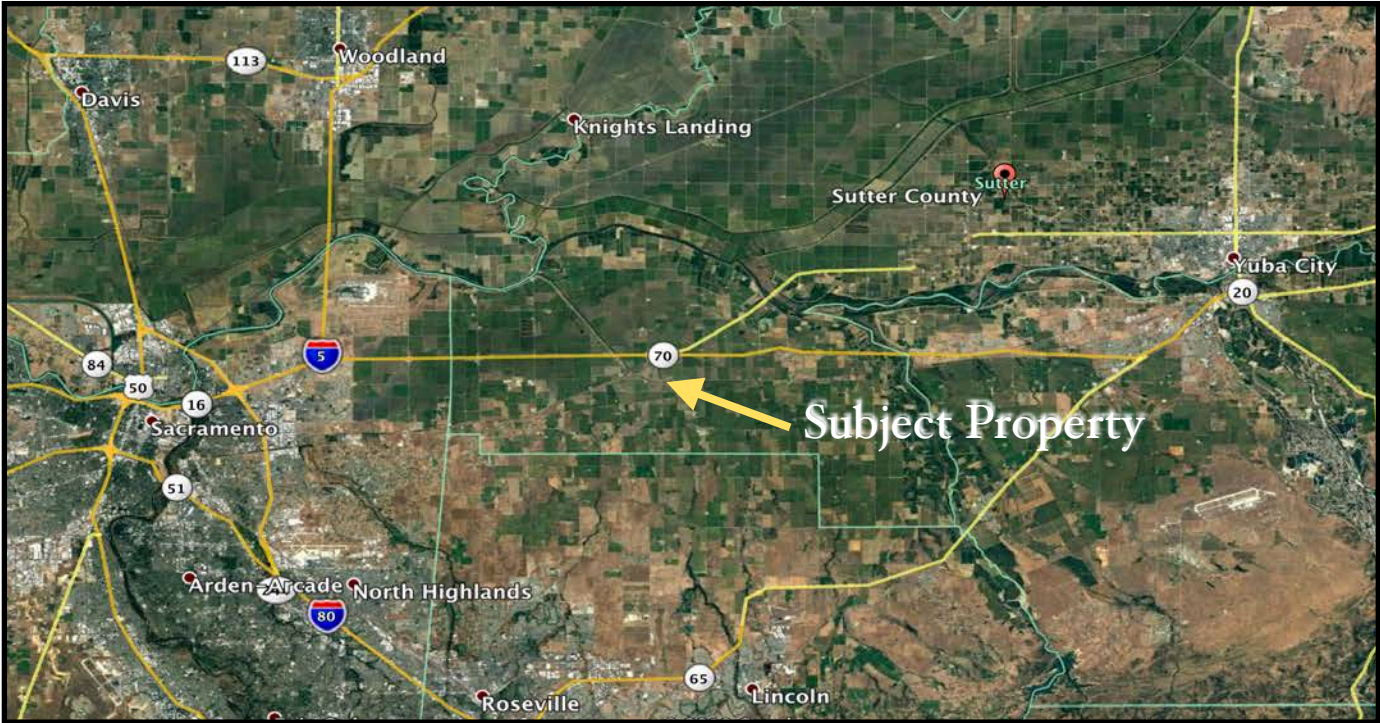
Price: \$5,150,000. Cash to Seller.



Sutter County Almonds

254.7 Assessed Acres

Sutter County, CA



Sutter County Almonds

254.7 Assessed Acres

Sutter County, CA



Map unit symbol	Map unit name	Rating	Acres in AOI	Percent of AOI
105	Capay silty clay, occasionally flooded, 0 to 2 percent slopes	2	205.0	100.0%
Totals for Area of Interest			205.0	100.0%

Sutter County Almonds
254.7 Assessed Acres
Sutter County, CA





www.cornerstonelandco.com

For additional information please contact Cornerstone Land Company

Josh Cook & Gabe Foster

1510 Poole Blvd. Ste. 301

Yuba City, CA 95993

530.491.0102

www.cornerstonelandco.com

BRE. Lic. # 01966240

Acreages and property boundaries herein are approximate, and maps and photos may not be to scale. This offering was prepared solely as a brief overview of the subject property being offered herein. Prospective purchasers are advised that changes may have occurred in the physical, financial, legal, and governmental aspect/conditions of the property, prior to, during, and after this offering was prepared. Neither the broker nor the seller makes any representation or warranty, expressed or implied, as to the completeness and accuracy of the information contained herein, or as to any other matter related to the assets including any subsequent information that the seller or third parties may provide to buyers. The buyers are advised to conduct a careful, independent investigation of the property, using appropriate and qualified consultants, advisors, and legal counsel to determine the suitability of the property for buyer's intended uses. No Representations or Warranties. Disclosing Party does not make any representation or warranty whatsoever, express or implied, with respect to the Confidential Information, including, without limitation, as to the accuracy or completeness of the Confidential Information, and Disclosing Party shall have no liability whatsoever to Receiving Party, any Receiving Party Representative or any other person or entity resulting from such party's use of any Confidential Information, except to the extent, if any, contained in any purchase agreement entered into by Disclosing Party and Receiving Party in connection with the Proposed Transaction. Without limiting the foregoing, Receiving Party acknowledges and agrees that the Confidential Information may not include all information in Disclosing Party's possession relating to the Property, or all information required by Receiving Party in order to determine whether to proceed with the Proposed Transaction, and may not include any of the following: any appraisal of the Property; any internal Disclosing Party memoranda, analyses or other communications pertaining to the Property, if any; or any such communications or other information exchanged between Disclosing Party and any of Disclosing Party's consultants or other advisors, including legal counsel. We believe the information contained herein to be correct. It is obtained from sources which we regard as reliable, but we assume no liability for errors or omissions.